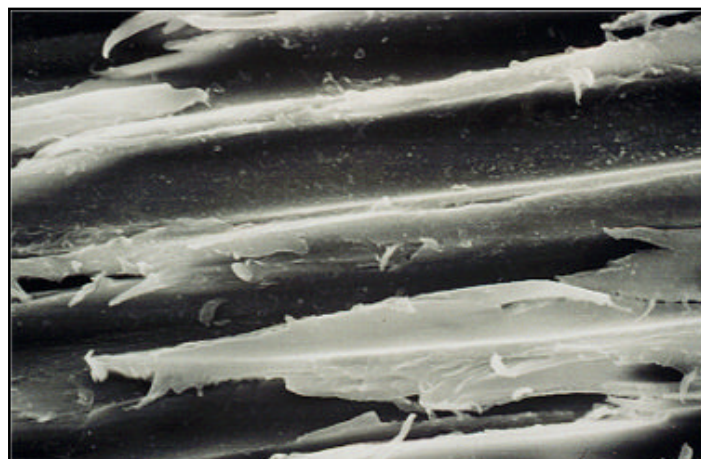


Bait aversion in German cockroaches and call-backs in those bed bug control jobs have sent many a service technician back to crack-and-crevice application (C+C). Routine pest control may have wandered away from C+C treatments because cockroach baits and fan sprays for bed bugs seemed easier. But C+C makes sense when you consider the habits of these household pests.

Habits. German cockroach infestations are 75-80% nymphs and 20-25% adult males and females. Nymphs spend 90% of their time inside the harborage—the first few stages may never leave. It is only the large (4th and 5th stage) nymphs that regularly forage outside the harborage. Females carrying an eggcase generally stay in the harborage for about 28 days. After depositing the eggcase, they forage for 3-5 days, then start production of the next eggcase. Males forage every night and may be killed when contacting treated surfaces. But females need to mate only once to produce their lifetime total of 6 eggcases. Removing males from the population has little impact on controlling the infestation. Crack-and-crevice application would get 90% of the population 90% of the time.

Bed bug adults and nymphs spend 90% of their time in a harborage close to the bed. Nymphs need only one blood meal every time they molt, and adults feed only every 3-4 days. When bed bugs do leave the harborage it is in the early morning and only for a few hours. Treating suspected harborages (baseboards, headboards, night stands) will contact most of the infestation.

Surfaces. Cockroaches and bed bugs prefer to rest on 'rough' surfaces, because their feet (tarsi) can grip craggy and uneven surfaces. The bare wood behind baseboards and inside kitchen cabinets and night stands suits them very well. These enclosed surfaces cannot be reached with a fan spray or a pin stream. Use the C+C straw on the B&G Multijet Tip, the red straw on the BASF Phast Shot™ or B&G Accu-Spray, or the C+C



Close-up of bare wood (electron microscope)

straw on an aerosol delivery system. To be effective (yea, there's research data) the C+C straw must be inserted into the harborage to get coverage.

Bunker Busters!

Forget bait and wait - get the thrill of the kill!

ADU
Works with
Whitmire™,
Waterbury™, and
many other
aerosols!

Penetrate deep into pest hiding places with the powerful new Aerosol Delivery Unit (ADU)

Quickly kill cockroaches, bedbugs, ants, pantry pests, and all other types of pests living in cracks, crevices, and wall voids. Reduce or **eliminate call backs** by applying the latest aerosols deep into harborages where pests hide. More killing - less waiting!

The revolutionary new ADU **attaches** to your favorite aerosol in **under 3 seconds** while virtually eliminating leakage on aerosol installation. Its simple 2 step attachment procedure reduces technician training time to get them productive quickly. Two ADU models put you in control by enabling you to use most aerosols available to the pest management professional. **You've got to try it yourself to see the difference. Call your distributor sales rep today for a demo.**



Dust-em with the 1150 Bulb Dust-R for quick kill

- ✓ Plastic tips & extensions safer around electricity
- ✓ Use dusts and granules
- ✓ Powerful but easy squeezing natural rubber bulb
- ✓ Convenient belt clip



Don't forget the workhorse B&G Sprayer for C+C

- ✓ Dedicate one for C+C
- ✓ Order with the 8" wand and carry case
- ✓ Fan spray with same tool
- ✓ Lower your treatment costs



Carry more - do more! Order B&G professional carry cases. Put your company name on them!

C+C with your favorite residual or IGR using the new Accu-Spray

- ✓ 16 oz capacity
- ✓ Atomizing and C+C tips included
- ✓ Just 8-10 pumps on pump tube for lots of C+C service
- ✓ 6' recoiling hose
- ✓ Measuring device and product conversion chart for easy diluting to label specs
- ✓ Belt holster included



For technical assistance, please contact:

William H. Robinson, PhD

504-382-9238



Claude Thomas, PhD

904-545-7125



David Mathis

607-760-1661



Robert Heiney

678-688-5601

