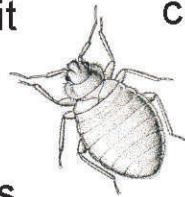




“Bed bugs and Swine Flu have followed the same course that other ‘outbreaks’ have taken: it usually begins with a flurry of media attention, followed by increased public alarm and concern, followed by more media coverage then more public reaction, a measured and usually effective response to the problem.”

The final step is when the problem finds a place with those that went before: MRSA, West Nile virus, and Bird flu. Bed bugs and Swine flu will soon be bark of the background noise—we’ll deal with them when they appear. We have the tools and the chemicals / drugs to solve the problem, but we can’t control their spread very well.

Bed bug control has evolved in the last five years, from the ‘hose it down’ crisis strategy to a deliberate and selective application to known harborage sites. We can apply less insecticide, and use it more effectively. This is not new, we’ve been down this road before with an insect that spends the day in cracks and crevices, is active for only a few hours a night, may not travel far from it’s harborage to get food, and has developed resistance to some insecticides. Does that sound familiar?



Crack-and-crevice application to infested harborages near food and water (kitchens and bathrooms) provided control of German cockroaches. Similarly, crack-and-crevice application to infested

harborages near the food source (warm blooded animal) of bed bugs will provide control. Of the German cockroaches in a structure, 70-80% are associated with the kitchen and bathroom—where the food is. Of the bed bug adults and nymphs infesting a room, 70-80% are associated with the bed, the adjacent furniture and baseboard—where the food is each night. A control program that targets these known harborage sites will get control.

As with other household insect pests, bed bug control comes down to application—getting the insecticide to the pest or the harborage (or both). Thorough treatment of the bed frame, box spring and mattress targets the majority of the population. As we learned from German cockroaches, once you take out a critical number (‘tipping point’) the infestation will not recover.

Research data from hotels and apartment buildings has shown that persistence of bed bugs was not due to re-infestation, but failures in pesticide application. Once the delivery improved, control improved. The problem was not the bed bugs, but the time and the tools used.

Essential Tools for Bed bugs



For voids, cracks, crevices, & under box springs, use the PAS machine



The \$598 PAS machine quickly pays for itself in chemical savings vs. expensive aerosol cans

Reducing production time is critical to keeping service routes profitable in any economy but it's especially important today. Bed bug service is labor intensive with a high potential for call-backs. That's why the new PAS machine is today's 'must-have' tool. The PAS quickly and efficiently treats just about any bed bug infested target location.

In fact, PAS machine users report up to 40% time savings on bed bug service vs alternative application methods. That's because the electric compressor driven PAS generates potent aerosol fog that quickly penetrates deep into pest hiding places for fast killing action with less call-backs.

Reduce (or increase) the chemical-air ratio with a simple turn of the regulator to kill more pests while using less chemical. You can even turn off the air at the tip and apply liquid only as a pin-stream for specialized applications. Save more: the PAS BASIC machine has a suggested list price of \$598.

Multiple target locations - one simple to use tool

The B&G compressed air sprayer is the work horse of the industry permitting you to treat multiple target sites quickly and efficiently. The precision tip on the B&G sprayer delivers 6 oz per minute on the fine fan setting and 17 oz per minute on the course setting at 20 psi tank pressure. This makes it easy to do spot treatments and other larger spraying tasks. The crack & crevice tip delivers 1.6 oz per minute making the B&G sprayer cost effective for C&C treatments. *Carry your sprayer in the B&G Carry Case for a more professional look.*



Click for website



Use the latest dust formulations for fast, less toxic treatments

Apply Drione™, diatomaceous earth, pyrethroid dusts, and other dust formulations with the 1150 Bulb Duster from B&G. Complete with features others charge extra for - 2 extensions, belt clip, and extra fine tip. Plus one you only get with the 1150 Duster - gasketless top for better sealing against dust leaks. The oversize bulb is made of natural rubber and holds a cup of dust or granules. The all plastic extensions and tips reduce exposure to electricity and are a better choice than metal dusters when working around electric outlets.

1150 Bulb Duster



For technical assistance, please contact:

SE USA	Claude Thomas, PhD.	904-545-7125
NE USA	David Mathis	607-760-1661
West USA	Robert Heiney	678-688-5601 x131
Asia	William H. Robinson, PhD	540-382-9238

 cthomas@bgequip.com

 dmathis@bgequip.com

 rheiney@bgequip.com

 brobinson@bgequip.com

