



XR VALVE

USER MANUAL ADDENDUM



DESCRIPTION

The XR valve is a resin and brass heavy-duty corrosion-resistant valve with trigger handle shut-off primarily used for outdoor liquid applications. It is used on several of the B&G products, including models of the Primeline and VersaFoamer HH. Please refer to the User Manual for your sprayer, this addendum only provides information on the valve and associated nozzles and is designed to supplement the User Manual of the sprayer.

EXTENSIONS

Extensions are available for the XR valve in brass and stainless steel to extend the distance between the valve and the nozzle from 9", 18" or 24".

Length	Material	Order Number (US)	Order Number (EU)
9" (23 cm)	Brass	22045500	1608003751
	Stainless steel	22045510	1608003752
18" (46 cm)	Brass	22045600	1608003753
	Stainless steel	22045610	1608003754
24" (61 cm)	Brass	22045650	1608003755
	Stainless steel	22045710	1608003758



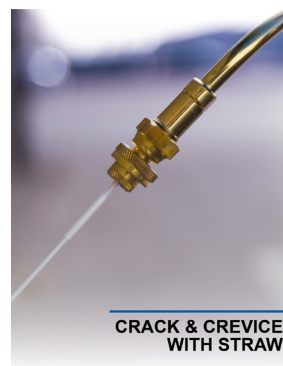
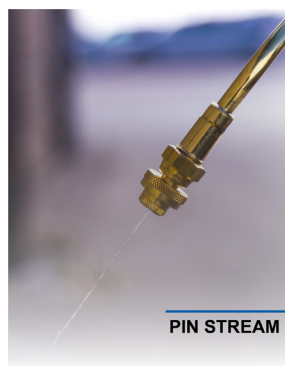
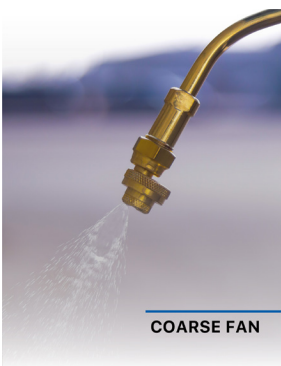
NOZZLES & TIP ASSEMBLIES

1. B&G 4-WAY CRACK & CREVICE TIP ASSEMBLY #22049466/1608003819

Tip	Flow Rate		Image
	oz/min	ml/min	
50° Narrow/Coarse Fan	14.1	417.0	
80° Wide/Fine Fan	6.4	189.3	
Large Pin Stream	8.9	263.2	
Tips that Are Inserted into Crack & Crevice Orifice			
1" (2.5 cm) Red Crack & Crevice Straw 6 oz/min (177.4 ml/min)			
6" (15 cm) Crack & Crevice White Straw 3.8 oz/min (112.4 ml/min)			
3.5" (9 cm) Stainless Steel Injector Needle			
2" (5 cm) Stainless Steel Void Tip			
4" (10 cm) Stainless Steel 4-Way Void Tip			

2. B&G 4-WAY TIP ASSEMBLY #22049451/1608003816

Tip	Flow Rate		Image
	oz/min	ml/min	
50° Narrow/Coarse Fan	14.1	417.0	
80° Wide/Fine Fan	6.4	189.3	
Large Pin Stream	8.9	263.2	
Small Pin Stream	4.5	133.16	

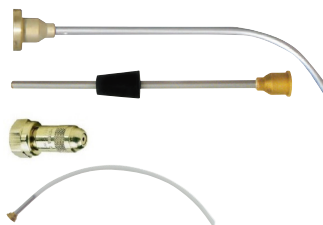


3. 6" CURVED TIP FOR VERSAFOAMER HH #16200013/1208001095

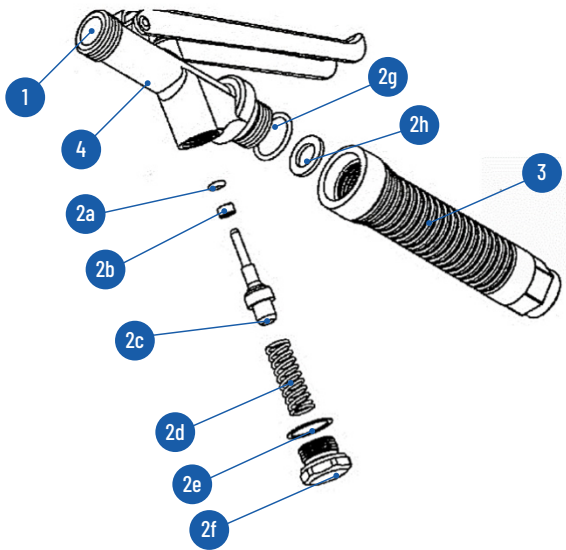
4. STRAIGHT TIP FOR VERSAFOAMER HH #16200018/1108004767

5. ADJUSTABLE PIN-TO-CONE #23083602/1608003917

6. DRAIN TIP FOR VERSAFOAMER HH #16200023/1108004768



EXTENDA-BAN VALVE PARTS



Number	Description	Order Number (US)	Order Number (EU)
1	Valve assembly (complete without tip)	22037500	1208001177
2	XR Valve Kit (includes parts 2a-2h)	22037510	1108004812
2a	O-ring	N/A	N/A
2b	Brass guide	N/A	N/A
2c	Valve stem	N/A	N/A
2d	Valve spring	N/A	N/A
2e	Copper gasket	N/A	N/A
2f	Cap	N/A	N/A
2g	Gasket	N/A	N/A
2h	O-ring	N/A	N/A
3	Handle	22037503	1208001178
4	XR Valve body	22037501	1608003690

TROUBLESHOOTING

Problem	Solution
Valve body leaking	<ul style="list-style-type: none"> Replace O-ring at base of handle; replace copper gasket at base of valve stem.
Tip Leaking	<ul style="list-style-type: none"> Clean or replace check valve at end of valve extension.

DISPOSAL

Please follow all local regulations when disposing of equipment.

CONTACT

Contact your local distributor or Pelsis country-specific location for information on spares and service.

US: B&G Equipment, 135 Region South, Jackson, GA, 30233, USA

Contact Number: 1-800-544-8811

Email Address: CustomerService@BGEquip.com

UK: Pelsis Ltd, Sterling House, Grimbold Crag Close, Knaresborough, HG5 8PJ, UK.

Contact Number: +44 (0) 800 988 5359

Europe: Pelsis Belgium NV, Industrieweg 15, 2880, Bornem, Belgium.

Contact Number: +32 (0) 3 886 22 11

All Other Countries: B&G Equipment, 135 Region South, Jackson, GA, 30233, USA

Contact Number: 1-678-688-5601

Email Address: CustomerService@BGEquip.com