



BAN-DRIP VALVE

USER MANUAL ADDENDUM



DESCRIPTION

The Ban-Drip valve is a resin pistol-grip valve with tip shut-off, designed for indoor and outdoor use. It is used on several of the B&G products, including models of the Primeline. Please refer to the User Manual for your sprayer, this addendum only provides information on the valve and associated nozzles and is designed to supplement the User Manual of the sprayer.

NOZZLES & TIP ASSEMBLIES

1. B&G 4-WAY CRACK & CREVICE TIP ASSEMBLY #22049466 / 1608003819

Tip	Flow Rate		Image
	oz/min	ml/min	
50° Narrow/Coarse Fan	14.1	417.0	
80° Wide/Fine Fan	6.4	189.3	
Large Pin Stream	8.9	263.2	
Tips that Are Inserted into Crack & Crevice Orifice			
1" (2.5 cm) Red Crack & Crevice Straw	6 oz/min (177.4 ml/min)		
6" (15 cm) Crack & Crevice White Straw	3.8 oz/min (112.4 ml/min)		
3.5" (9 cm) Stainless Steel Injector Needle			
2" (5 cm) Stainless Steel Void Tip			
4" (10 cm) Stainless Steel 4-Way Void Tip			

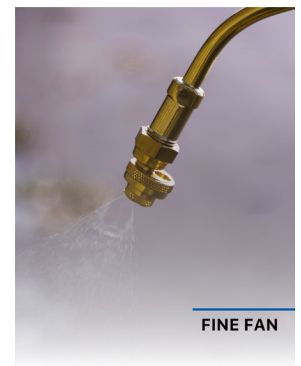
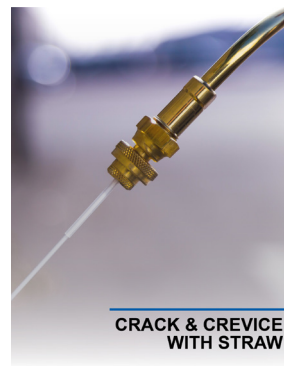
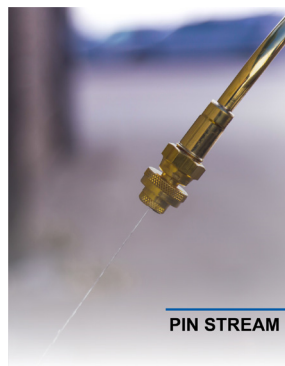
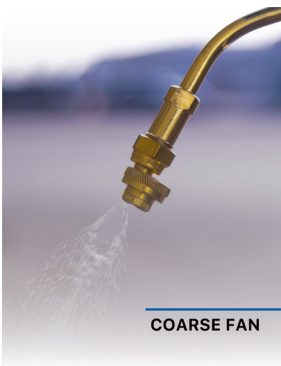
BAN-DRIP VALVE

User Manual Addendum



2. B&G 4-WAY TIP ASSEMBLY #22049451 / 1608003816

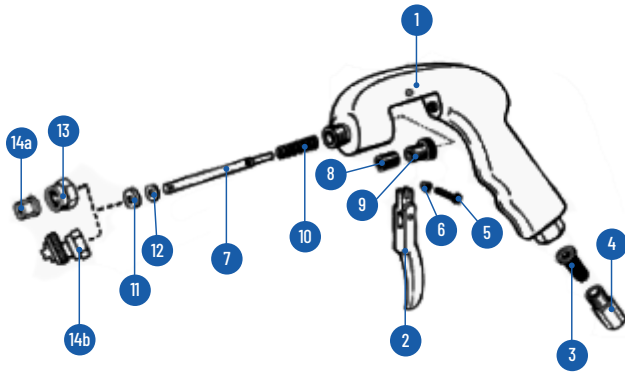
Tip	Flow Rate		Image
	oz/min	ml/min	
50° Narrow/Coarse Fan	14.1	417.0	
80° Wide/Fine Fan	6.4	189.3	
Large Pin Stream	8.9	263.2	
Small Pin Stream	4.5	133.16	



3. TIPS THAT ARE INSERTED INTO THE TIP CAP

Tip	Order Number (US)	Order Number (UK)	Image
Plastic C&C Straw	22049500	1208001207	
Ban-Drip Fan Tip (3/16" diameter, 12" long)	22039677	1203000092	
8" Mulch/Ant Mound Probe	22071684	1208001281	
1" Wood Injection Tip	22071824	1203000224	
4" Wood Injection Tip	22071827	1603000165	
0.5" Wood Injection Tip	24040077	1203000257	

PARTS



Number	Description	Order Number (US)	Order Number (EU)
1	Valve body	22039700	1208001181
2	Valve trigger	22039800	1208001182
3	Mesh strainer	22039900	1608003706
4	Pipe thread strainer	22040100	1608003707
5	Trigger screw	22040300	1608003708
6	Trigger nut	22040500	1608003709
7	Valve rod and pin	22040700	1208001183
8	Rod packing	22041100	1608003710
9	Brass packing nut	22040900	1208001184
10	Rod spring	22041300	1608003711
11	Seat gasket holder	22041500	1208001185
12	Seat gasket	22041700	1608003712
13	Tip cap	22033100	168003669
14a	Fine fan tip	22032100	1608003646
14b	4-Way Crack & Crevice Tip	22049466	1608003819

TROUBLESHOOTING

Problem	Solution
Valve body leaking	<ul style="list-style-type: none"> Tighten packing nut; replace rod packing (22041100/1608003710).
Tip Leaking	<ul style="list-style-type: none"> Clean or replace seat gasket (22041700/1608003712)
No Liquid coming out	<ul style="list-style-type: none"> Inspect and clean filter (22039900/1608003706)

DISPOSAL

Please follow all local regulations when disposing of equipment.

CONTACT

Contact your local distributor or Pelsis country-specific location for information on spares and service.

US: B&G Equipment, 135 Region South, Jackson, GA, 30233, USA
 Contact Number: 1-800-544-8811
 Email Address: CustomerService@BGEquip.com

UK: Pelsis Ltd, Sterling House, Grimbald Crag Close, Knaresborough, HG5 8PJ, UK.
 Contact Number: +44 (0) 800 988 5359

Europe: Pelsis Belgium NV, Industrieweg 15, 2880, Bornem, Belgium.
 Contact Number: +32 (0) 3 886 22 11

All Other Countries: B&G Equipment, 135 Region South, Jackson, GA, 30233, USA
 Contact Number: 1-678-688-5601
 Email Address: CustomerService@BGEquip.com