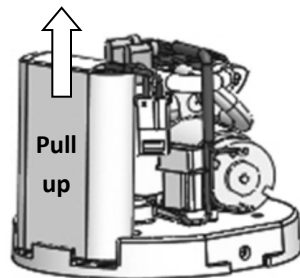
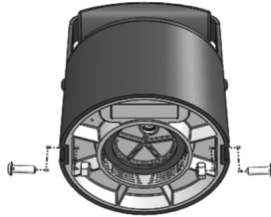
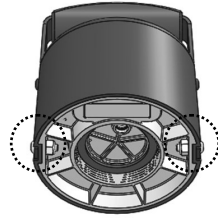


REPLACING THE BATTERY

- PTT must be removed from the tank and placed on a clean and dry surface. The On / Off switch must be in the Off position.
- Use a small hex wrench and an open-end wrench to remove the screws that are visible from the underside of the tank top.
- When both screws are removed the top of the unit can be removed by pulling on the padded handle.
Note: Lift off the top carefully and do not damage the connection of the On / Off switch wire.
- Disconnect the 2-pin connector attached to the top of the battery and pull the battery pack up from its base.
- Insert a new battery pack and re-attach the 2-pin connector.
- Return the top to the base and re-connect the two screws on the sides.



PRESSURIZING TANK TOP - PTT



OPERATING INSTRUCTIONS

READ AND UNDERSTAND THE SAFETY PRECAUTIONS BEFORE OPERATING THIS DEVICE

Electric Power. The PTT is designed to operate from an internal, rechargeable battery. The battery must be recharged periodically to maintain operation of the internal air pump. **Battery charger** operates from a three-wire power system in which one is a ground. Specifications: Input: AC 100 - 240V, 50/60 Hz, 0.3A. Output: DC 12.6V / 1.8A. The battery in the PTT recharges in about 5 hours.

Compatibility. The PTT is compatible with stainless steel tanks made by B&G Equipment Co. Use on other tanks is not sanctioned. It is not intended for use with the B&G funnel-top concrete sprayer (#12014006) or the funnel-top chemical resistant sprayer (#12013900).

Operation. Set and turn the PTT on the open top of a B&G stainless steel tank. After $2\frac{3}{4}$ turns, the PTT will be securely attached.

Note: If the PTT turns 4 times the tank gasket on the underside is missing and must be replaced. Do not operate PTT without the tank gasket.

Press On / Off switch to On to begin pressurizing a tank containing liquid insecticide. Allow 2.5 minutes to pressurize a 1-gallon tank containing 1 gallon of liquid. Switch should remain On while spraying. Turn Off when tank is empty or spraying completed. **Note:** Slowly unscrew PTT from a pressurized tank to allow air to escape.

B&G

B&G

135 Region South Drive, Jackson, GA 30233
Toll Free Customer Service
800-544-8811

CARE AND MAINTENANCE

- Periodically clean the underside of the PTT using a cloth wet with detergent solution. Remove insecticide residue from the underside and the gasket.
- Inspect the tank gasket for cracks and replace when damaged. Insert gasket securely into the PTT to prevent it from coming loose when the tank is refilled.
- Clean around the pump outlet port (under side) to remove insecticide residue or other debris.

BEFORE YOU START

- Charge the battery for at least 4 hours
- Inspect the bottom of the PTT to be certain the tank gasket is firmly in place..
- Start with a sprayer tank that is filled to the proper capacity. Do not over-fill the tank when using the PTT.

CHARGING THE BATTERY

- PTT has an internal battery that can be fully charged in about 4 hours. The battery charger operates with 110V and 220V and has lights to indicate the charging status.
- PTT battery can be charged while the unit is attached to a sprayer tank, or it can be removed from the tank and charged separately.
- When the battery is weak it will take longer to return the tank pressure to 30 psi (2.0 bar) during spraying.



B&G

ATTACHING THE TOP TO THE TANK

- PTT screws onto the top of a B&G stainless steel tank; after 2 - 3 turns the top should be tight and secure. If the pump runs continuously, it is an indication that the tank top is no tight.
- If it takes more that 3 turns to attach, the gasket on the underside of the tank top is missing or damaged. Do not operate the tank top without the gasket. Replace it with #22028000.



TANK TOP OPERATION

- PTT has an on-demand pump that operates only when the pressure in the tank drops to about 23 psi (1.5 bar). The pump will shut off automatically when the pressure reaches 30 psi (2.0 bar). Pressure in the sprayer tank will fluctuate between 23 and 30 psi during spraying.
- PTT requires about 2 minutes to pressurize the tank when it s filled to the 1 gallon (3.8 liters) mark on the side of the tank.
- PTT will deliver 27 to 30 gallons (102 to 113 liters) on a full battery charge.



TANK TOP GASKET

- PTT has a gasket on the underside that seals the tank top to the opening on the sprayer tank. The gasket seals the top of the sprayer tank to the bottom of the PTT; it prevents air from leaking from the pressurized tank.
- This gasket may become loose or stick to the top of the sprayer when the PTT is removed for filling the tank. The PTT should not be operated without the gasket because the top will not seal and the pump motor will run continuously.



B&G